



Standard davit

With manual or electric winch

The elegant, lightweight **atlas** standard davit perfectly compliments even the sleekest of superyachts. It makes light work of lifting dinghies, ribs, jet tenders, jetskis and other superyacht toys and has a safe working load (SWL) of 500kg.

Multiple deck sockets in stainless, GRP or aluminium allow for a single davit to be used in various locations around the vessel and then easily stowed away.

Choose from a spectrum of colours or carbon finish.

There are six standard sizes with reach ranging from 1500mm to 4000mm. Custom sizes and increased SWL are also available.

Twin davits

With electric winch

These twin yacht davits have been developed to suit the transoms of sailing vessels, bringing the elegant lines of the **atlas** range to the sailing yacht world. If you are looking for a solution to permanently lift and stow your dinghy or tender from the transom of your boat the **atlas** twin davit is the answer.

Our range includes raked twin davits and slider twin davits; both come with an internal electric winch as standard and have a safe working load of 500kg across the pair.

They come in a range of colours or carbon finish.

Baby davit

With manual or electric winch

With the same elegant lines and lightweight characteristics as our standard davits, the baby davit is the answer for smaller craft and docksides; perfect for lifting outboard motors, dinghies, jet tenders, seabobs, mini jetskis, and for man overboard.

Multiple sockets in stainless, GRP or aluminium allow for a single davit to be used in a number of different locations. Choose from a spectrum of colours or carbon finish.

There are three standard sizes with a reach between 900mm and 1500mm, weighing from just 11kg and lifting 125kg as standard. They can also be upgraded to have a safe working load (SWL) of 250kg.



If you are looking for a custom composite solution for a marine or non-marine application we can help.

We often work with customers to produce custom carbon products to their specification.

Recent manufacturing projects include:

- lightweight components for renewable energy industry
- isolation screens for Royal Navy communications masts
- carbon fibre passerelles and landing craft
- carbon lifting beams



Atlas Carbon Products from Jeremy Rogers Ltd

Lymington Yacht Haven King's Saltern Road Lymington SO41 3QD UK

T +44 (0)1590 646780 E info@atlascarbonproducts.com www.atlascarbonproducts.com

JEREMY ROGERS

Boat Builders & Composite Specialists



Why choose an atlas davit

Designed and produced by the world class team at Jeremy Rogers Ltd, builders of fine yachts, **atlas** is the world's leading manufacturer of carbon fibre marine davits.

We combine the latest technology and materials with a simple yet elegant design to produce the definitive lifting solution for the boating world.

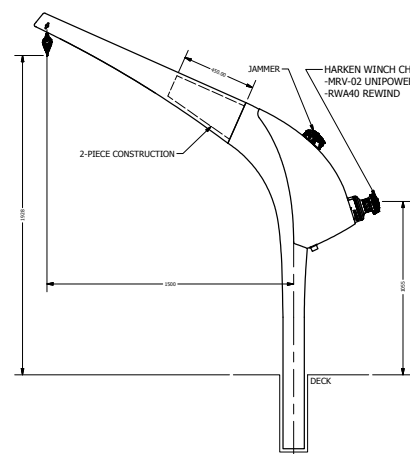
Whether you are lifting jet tenders or dinghies, jetskis or rescue boats, the **atlas** carbon davit range will have something to suit your needs.

Our exclusive, tried and tested, METS-DAME award winning range of lightweight davits have a number of different applications and are currently used all around the world – on superyachts, on dock sides and by the UK Ministry of Defence for man overboard safety.

Our full range of davits can be class approved to meet man overboard, man riding and rescue boat launching standard.

- **Portable – baby davits start from 11kg**
- **500kg safe working load as standard**
- **Available in a range of sizes**
- **Rotates through 360 degrees**
- **Quick and simple to erect and use**
- **Multiple watertight deck sockets**
- **Easily stowed**
- **CE approved and ISO9001**
- **METS-DAME award winner**

Standard davit With electric winch



All davits listed below have a safe working load (SWL) of 500kg

Reach: **1500mm**
Weight: 50kg*
Height under hook: 1930mm

Reach: **2000mm**
Weight: 55kg*
Height under hook: 2150mm

Reach: **2500mm**
Weight: 65kg*
Height under hook: 2370mm

Reach: **3000mm**
Weight: 70kg*
Height under hook: 2600mm

Reach: **3500mm**
Weight: 80kg*
Height under hook: 2820mm

Reach: **4000mm**
Weight: 85kg*
Height under hook: 3040mm

Technical specifications

Socket depth in deck: 450mm

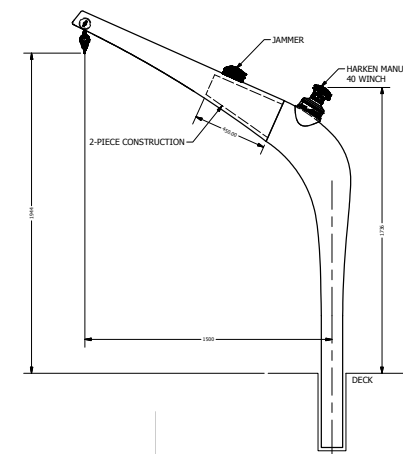
Socket internal diameter GRP, aluminium, stainless steel: 155mm

Electric winch: 12/24 volt

Bearings: plain polyester (optional roller bearing)

Construction: advanced pre-preg carbon fibre

Standard davit With manual winch



All davits listed below have a safe working load (SWL) of 500kg

Reach: **1500mm**
Weight: 40kg*
Height under hook: 1930mm

Reach: **2000mm**
Weight: 45kg*
Height under hook: 2150mm

Reach: **2500mm**
Weight: 55kg*
Height under hook: 2370mm

Reach: **3000mm**
Weight: 60kg*
Height under hook: 2600mm

Reach: **3500mm**
Weight: 70kg*
Height under hook: 2820mm

Reach: **4000mm**
Weight: 75kg*
Height under hook: 3040mm

Technical specifications

Socket depth in deck: 450mm

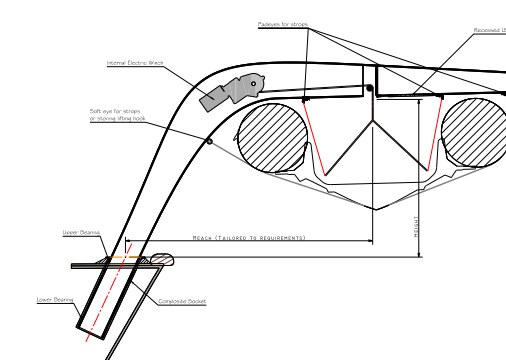
Socket internal diameter GRP, aluminium, stainless steel: 155mm

Manual winch with 5:1 purchase

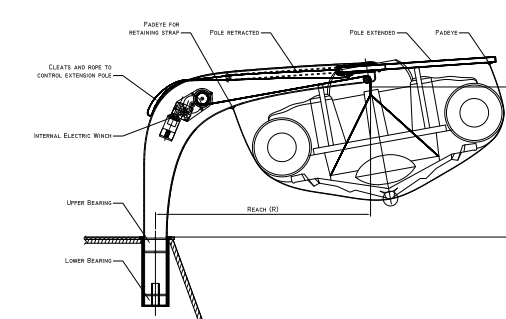
Bearings: plain polyester (optional roller bearing)

Construction: advanced pre-preg carbon fibre

Twin davit Raked



Twin davit Slider



Twin davits have a safe working load (SWL) of 500kg

Reach: **1470mm**
extending to: **2340mm**
Weight: 45-50kg*
Height under hook: 900mm

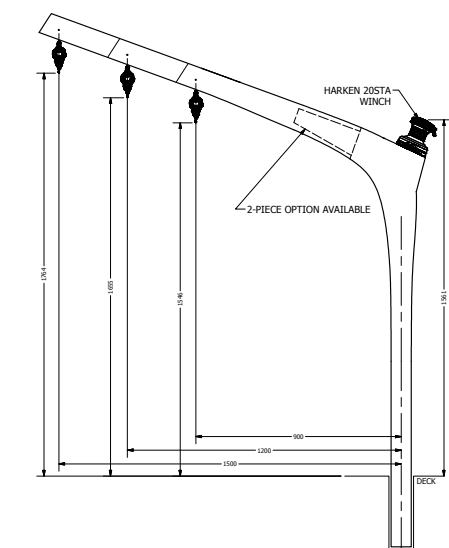
Technical specifications

Winch: bespoke internal electric winch, 12 or 24 volt

Socket depth in deck: 500mm

Construction: advanced pre-preg carbon fibre

Baby davit Manual or optional electric winch



Baby davits have a safe working load (SWL) of 125kg, upgradeable to 250kg

Reach: **900mm**
Weight: 11kg*
Height under hook: 1545mm

Reach: **1200mm**
Weight: 12kg*
Height under hook: 1655mm

Reach: **1500mm**
Weight: 13kg*
Height under hook: 1760mm

Technical specifications

Optional manual winch with 3:1 purchase

Socket depth in deck: 310mm

Socket internal diameter: 100mm

Optional 12 or 24 volt drive motors

Bearings: plain polyester

Construction: advanced pre-preg carbon fibre